



*Family owned and operated* EDCO has been on the **Road to Zero Waste** since its founding in 1967. With a focus on diversion, EDCO has developed an extensive network of recycling processing facilities that are collectively designed to maximize recovery efforts and create sustainable solutions for our environment.

**“We’ll Take Care of It”** is the foundation that EDCO approaches customers, communities, fellow employees and the environment. EDCO has long been recognized as an industry leader who is committed to enhance the quality of life for the communities we serve as well as our employees.

EDCO has embraced its unique role as an independent, premier service provider that is firmly committed to innovation that reduces the impact on the environment. EDCO believes it is our responsibility to leave a sustainable planet to future generations.



# EDCO's Recycling & Processing Facilities

As one of the largest recyclers in Southern California, EDCO does not own any landfills and instead has heavily invested into processing facilities.

EDCO has the largest network of local recycling processing facilities in San Diego County and one of the largest in the state. EDCO's combined permitted Southern California processing and transfer capacity is over **3,000,000** tons per year.

## EDCO's Facilities:

- ♻ Two Material Recovery Facilities (MRF's)
- ♻ Two Mixed Construction Demolition and Inert (CDI) Processing Facilities
- ♻ Six Transfer Stations
- ♻ Six State Certified Recycling Buyback Centers





# Material Recovery Facilities (MRF's)

EDCO's MRF's process commingled recycling using a series of screens, magnets, high-speed optic scanners, conveyors and EDCO personnel to separate mixed loads of recyclable material.

These state-of-the-art facilities allow EDCO to process mixed recycling with minimal contamination. Combined these facilities are capable of diverting over 438,000 tons of material from landfills each year.

Assisting jurisdictions throughout Southern California in achieving **Zero Waste** goals.



EDCO Recycling, Lemon Grove



Escondido Resource Recovery

# Mixed Construction Demolition and Inert (CDI) Processing Facilities



SANCO Resource Recovery (SRR) , Lemon Grove



EDCO CDI Recycling Facility – San Marcos

EDCO processes mixed construction loads of drywall, cardboard, lumber, metal, rock and asphalt at the company's CDI processing facilities.

Many of these materials can be reused or recycled, thus prolonging our supply of natural resources and saving valuable landfill space.

In 2019, EDCO enhanced the recycling recovery process at SRR by adding new state-of-the-art technology to increase the efficiency and the overall diversion quality keeping us ***On the Road to Zero Waste.***



# Public Disposal Site and Transfer Stations

EDCO's public disposal sites and transfer stations play a huge role in reducing the overall environmental impact of waste collection and disposal.

Instead of multiple trucks going to faraway locations, these trucks go to our transfer stations. The waste is offloaded, sorted and combined into larger trucks to be sent to landfills and recycling centers, ultimately reducing the total number of vehicular trips to and from each site.



EDCO Recycling and Transfer – Signal Hill

## EDCO's Facilities:

- ♻️ EDCO Station – La Mesa
- ♻️ Escondido Resource Recovery
- ♻️ Fallbrook Recycling and Transfer
- ♻️ Ramona Transfer Station
- ♻️ EDCO Recovery and Transfer – San Diego
- ♻️ EDCO Recycling and Transfer – Signal Hill



Ramona Transfer Station



# Recycling Buyback Centers

EDCO buys back recyclable items such as CRV plastics, cans and bottles. We also accept paper, cardboard, non CRV containers, used motor oil, E-Waste, household batteries, home-generated sharps and Fats, Oils and Greases (FOG) *free of charge*.

EDCO's Recycling Buyback Centers are conveniently located around Southern California. Supporting our local communities in reaching ***Zero Waste*** goals.

## EDCO's Facilities:

- ♻️ EDCO Station – La Mesa
- ♻️ EDCO Recycling Buyback Center – Lemon Grove
- ♻️ Fallbrook Recycling and Transfer
- ♻️ EDCO Certified Recycling Center – San Marcos
- ♻️ Ramona Transfer Station
- ♻️ EDCO Recycling and Transfer – Signal Hill



EDCO Station – La Mesa



EDCO Recycling and Transfer – Signal Hill

# EDCO Diverted Over 836,363 Tons from the Landfill in 2019



We saved over  
**851** thousand trees  
by recycling 50,075 tons of paper

We recycled 958 tons of aluminum



saving over

**1.5**  
million gallons of oil

We saved over **606** thousand cubic yards



of space in the landfill by  
recycling 67,410 tons of  
cardboard

We recycled 28,990 tons of glass saving



**2,174** tons of feldspar  
**5,508** tons of limestone  
**5,943** tons of soda ash  
**18,844** tons of sand

We saved over



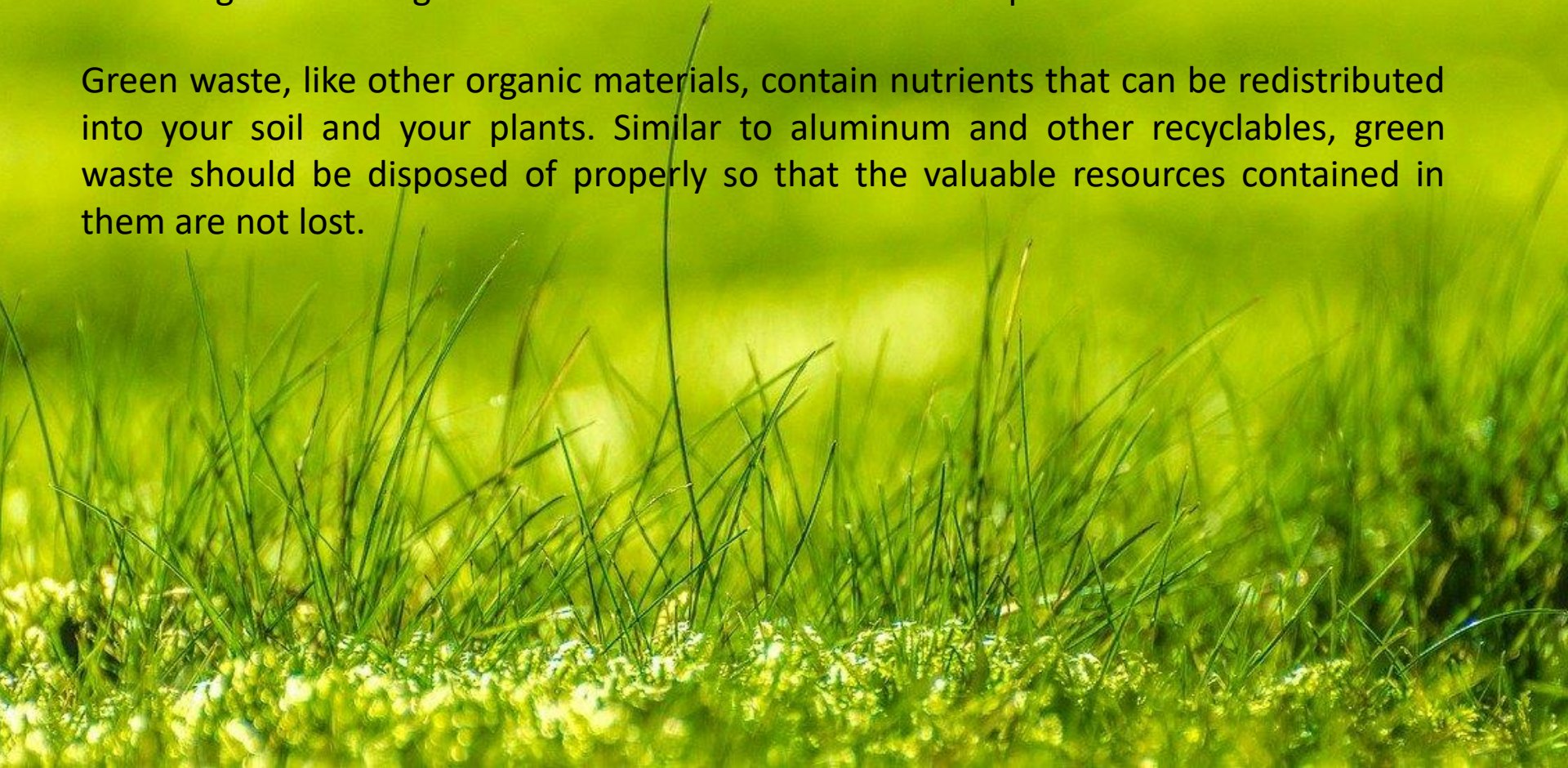
**22** million Kwh of energy  
by recycling 3,883 tons of PET



# What About Green Waste?

EDCO diverted **329,111** tons of green waste from the landfill in 2019. Disposing organic material in the landfill releases large amounts of methane, a potent green house gas, due to anaerobic decomposition. Recycling or composting yard trimmings reduces greenhouse gas emissions and conserves landfill space.

Green waste, like other organic materials, contain nutrients that can be redistributed into your soil and your plants. Similar to aluminum and other recyclables, green waste should be disposed of properly so that the valuable resources contained in them are not lost.





# EDCO Solar Facilities

As part of our environmental initiative, In 2019 EDCO completed construction on our fourth roof top solar facility. We use the solar system to offset the power of our natural gas compressor units, creating a more sustainable power and fuel source for collection operations. Solar power is the cleanest, most reliable form of renewable energy available today.

In 2018, we produced **300,507** kWh of electricity. Saving our environment in the following ways:

Greenhouse gas emissions from



**527,221** miles driven by an average passenger vehicle

CO2 emissions from



**27,096,803** smartphones charging

Carbon sequestered by



**3,513** tree seedlings grown for 10 years

# Future Projects

EDCO is a leader in developing innovative options to solid waste collection, transfer, processing, and disposal challenges.

Since EDCO opened its first mechanized recycling processing facility in 1989, EDCO has embraced **Zero Waste** as the goal and is committed to continually reinvest in this path.







## Escondido Resource Recovery (ERR)

EDCO is in the construction phase of the first fully permitted state-of-the-art, advanced technology Anaerobic Digestion (AD) Facility in San Diego County. Capable of powering our fleet of trucks with Renewable Natural Gas (RNG).

Anaerobic digestion is an efficient and environmentally sustainable technology that can make a significant contribution to the management of organic waste in California.

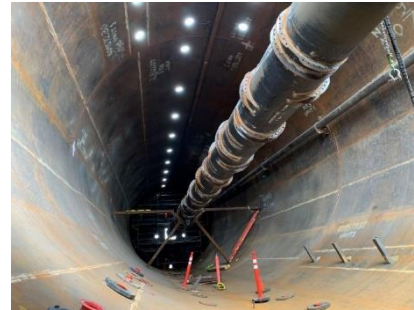
The site is filled daily with activity of multiple trades being coordinated by our General Contractor as well as Hitachi, the technology provider, and will be operational in early 2021. **Visit [edcodisposal.com](http://edcodisposal.com) to watch EDCO's live AD construction.**



January 13, 2020



February 21, 2020



March 24, 2020





## EDCO Recovery and Transfer (ER&T)

In response to evolving State Mandates and the City of San Diego's Zero Waste goals, in 2018 EDCO obtained land entitlements and permits for a number of facility enhancements at ER&T.

The Master Facility Plan includes permitting EDCO's second Anaerobic Digestion (AD) Facility, the first mixed waste processing line in the region, and a roof top solar facility designed to achieve LEED Silver Certification.

This facility will increase our recycling capability, produce Renewable Natural Gas (RNG) and clean energy continuing our journey ***On the Road to Zero Waste.***





# Ramona Organics Facility

Composting is nature's way of recycling. Yard waste and food waste are broken down and become food for plants.

Through composting the amount of garbage sent to the landfill is **reduced**, the organic matter is **reused** rather than dumped, and it is **recycled** into a useful soil amendment. By composting, the generation of greenhouse gases, particularly methane, is avoided.

In addition to emission reduction, compost replenishes and revitalizes exhausted farm soils by replacing trace minerals and organic material, reduces soil erosion and helps prevent storm water run off.

EDCO began construction of the Ramona Organics Facility in 2018 and the facility will be operational in 2020. The EDCO Ramona Organics Facility will play a significant role in diverting waste from landfills thereby conserving landfill space and reducing the production of leachate and methane gas.





# Our Fleet. Simply Sustainable

In an effort to reduce our impact on the environment, EDCO is committed to converting our fleet to Renewable Natural Gas (RNG) powered vehicles. EDCO currently operates Natural Gas power tractors, collection trucks, pick-up trucks, bin delivery trucks, maintenance trucks and bulky item trucks.



# Why Renewable Natural Gas (RNG) ?



- RNG is an ultra-clean and ultra low-carbon natural gas alternative. As organic waste breaks down it emits methane gas, called biogas.
- The methane gas is captured then processed, purified, and distributed to EDCO's nine natural gas fuel stations.
- RNG provides further reduction in Greenhouse Gas effects over the use of extracted natural gas.
- RNG diverts organic waste from our landfills and turns it into a renewable form of energy.



# Natural Gas (NG) Stations

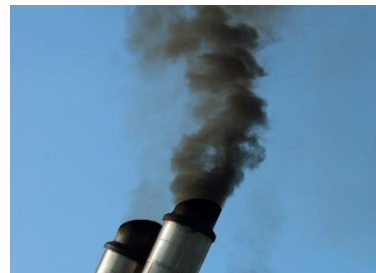
As part of our commitment to the environment and a key part of the regional infrastructure needed to expand the use of NG Vehicles, EDCO operates 3 public NG stations. In addition, EDCO operates 6 time-fill facilities that serve company vehicles.

Distribution History	
2017	2,120,241
2018	2,351,323



In 2019, EDCO distributed **over 2.5 million** diesel gallon equivalents (DGE's) of natural gas.

## Environmental Benefits:



2.5 million pounds of diesel fuel produces **55,000,000 pounds of CO<sub>2</sub>**



Natural gas equivalent produces **near zero CO<sub>2</sub>**



# Time-fill

Time-fill allows a fleet to fill overnight during off-peak hours. Off-peak hours are times when the energy grid is not under a lot of stress and has excess electrical generation. *If that energy is not used, it's actually wasted.*

Time-fill also increases efficiency of refueling. In addition, time-fill stations ensure that compressors only start and stop one time per day, reducing maintenance and extending the life of the equipment.





# EDCO's Near Zero (NZ) Emission Collection Fleet

- Near Zero engines produce almost zero emission of Nitrous Oxide (NOx), which is the primary generator of air pollution.
- The NOx emissions are 90% less than 2010 standards, with ten NZ engines producing the NOx equivalent of just one 2010 engine.
- NZ technology meets the State of California 2023 NOx and 2031 petroleum reduction goals. The California Air Resources Board (CARB) identifies that the NZ engine emissions are equivalent to a 100% battery powered vehicle using electricity from a modern natural gas power plant.
- The result is that AD generated RNG powering a NZ unit, creates a carbon neutral or carbon negative (depending upon the specific intensity of the AD RNG) collection fleet.



## Residential

Curbside Trash, Recycling &  
Green Waste Service  
Temporary Bin Service  
Storage Containers  
Roll-off Boxes  
Bulky Item Pick up  
Christmas Tree Recycling

## Industrial

Storage Containers  
Trash Roll-off Boxes  
Recycle Roll-off Boxes  
Compactor Services

## Commercial

Trash Bin Services  
Recycle Bin Services  
Storage Containers  
Roll-off Boxes  
Bulky Item Pick up  
Compactor Services

# EDCO

## Services at a Glance

*“We’ll Take Care of It”*

## Events

Cardboard Trash  
& Recycle Boxes  
Commercial Trash Bins  
Commercial Recycle Bins  
Roll-off Boxes

## Free Drop Off

Electronic Waste Recycling  
Cooking Oil Recycling  
Batteries – Residential Customers  
Sharps – Residential Customers

## Additional Services

Waste Assessments  
Specialized Reporting  
Educational Presentations



# Household Hazardous Waste (HHW) Partnerships

Household Hazardous Waste that is improperly managed poses a serious threat to human health and the environment. HHW is the unused or leftover portion of any hazardous chemicals or materials. Any leftover household product that is labeled with DANGER, WARNING, TOXIC, CAUTION, POISON, FLAMMABLE, CORROSIVE, or REACTIVE is considered a household hazardous waste. EDCO has developed unique environmental partnerships to ensure that HHW is handled safely.

## **Poway HHW Facility**

Partnership with:  
Regional Solid Waste Association



## **Escondido HHW Facility**

Partnership with:  
City of Escondido



## **Ramona HHW Facility**

Partnership with:  
County of San Diego



## **EDCO's Enviromental Center**

Partnership with:  
City of Signal Hill, City of Long Beach, County of  
Los Angeles, and Los Angeles County Sanitation District



## **Vista HHW Facility**

Partnership with:  
Regional Solid Waste Association



## **La Mesa HHW Facility**

Partnership with:  
City of La Mesa



# Public Education

The key to maximizing sustainability is to maximize program participation among our customers. Public Education plays a vital role in sustaining safe and effective waste & recycling programs. EDCO offers tours as well as at site presentations to educate organizations on the importance of recycling. EDCO's Public Education efforts have been honored at numerous levels.



EDCO's Website

EDCO's Award Winning Newsletters



Billing Inserts and Postcards



Elementary School Presentation



Tour of C&D Processing Facility





We believe in making a difference! EDCO actively supports the communities we serve. From litter abatement to home town parades and local clean-ups, you're more than likely to see EDCO involved in numerous community events.

*Giving Back*





# Employee Growth and Development

As a family owned and operated company EDCO is committed to offering a rewarding career to our employees. We focus on providing employees all the training and tools they need so they can grow and be successful within EDCO.

EDCO's average employee has a 15.5 year tenure, with numerous 20-year, 30-year, and even several 40-year employees.





# Employee Appreciation

EDCO's success is thanks to our loyal and committed team of employees. Throughout the year we celebrate employees at the Founders Day Celebration, End of Summer BBQ, Christmas Party, and Family Day Events.

In addition EDCO provides Anniversary Recognition, Thanksgiving Turkeys and Christmas Bonuses.



Family Day Event



20 and 40 Year Celebrations



Founders Day Celebration



EDCO has an extensive environmental and safety program that manages and minimizes risks associated with solid-waste and recycling collection, handling, recovery, and disposal.

All EDCO employees participate in extensive safety training and review safety and operations related topics in 12 meetings per year. Employees are financially incentivized for their safety record and are rewarded on a quarterly basis.

As evidenced by our Mission Statement, the EDCO vision remains as clear as it was in 1967.





*Our mission is to efficiently serve the waste collection, disposal and recycling needs of our customers while ensuring a safe and rewarding career for our employees.*

*We will achieve this objective in a professional, innovative manner that consistently displays our integrity and genuine commitment to provide superior customer service.*



*"We'll Take Care of It"*

*Our Mission*

---

*Our Vision*