


# Sustainability Report

## 2022



**RDS** Ramona  
Disposal  
Service  
[ramonadisposal.com](http://ramonadisposal.com)  
*"We'll Take Care of It"*

***On the Road to Zero Waste***



*Family owned and operated* EDCO, including Ramona Disposal Service as a related company, has been on the ***Road to Zero Waste*** since its founding in 1967. With a focus on diversion, EDCO has developed an extensive network of recycling and organics processing facilities that are collectively designed to maximize recovery efforts and create sustainable solutions for our environment.

***“We’ll Take Care of It”*** is the foundation that EDCO approaches customers, communities, fellow employees and the environment. EDCO has long been recognized as an industry leader who is committed to enhance the quality of life for the communities we serve as well as our employees.

EDCO has embraced its unique role as an independent, premier service provider that is firmly committed to innovation that reduces the impact on the environment. EDCO believes it is our responsibility to leave a sustainable planet to future generations.

# EDCO's Recycling & Processing Facilities

As one of the largest recyclers in the State of California, EDCO does not own any landfills and instead has heavily invested into processing facilities.

EDCO has one of the largest networks of recycling processing facilities in the State of California. EDCO's combined permitted Southern California processing and transfer capacity is over **4,000,000** tons per year.

## EDCO's Facilities:

- ♻ Three Material Recovery Facilities (MRF's)
- ♻ Two Mixed Construction Demolition and Inert (CDI) Processing Facilities
- ♻ Six Transfer Stations
- ♻ Six Buyback Centers
- ♻ Six HHW Facility Partnerships
- ♻ Four Public RNG Stations
- ♻ Seven Time-Fill Stations





# Material Recovery Facilities (MRF's)

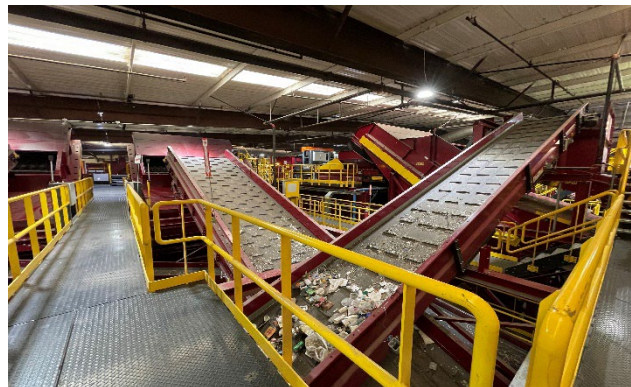
EDCO's MRF's process commingled recycling using a series of screens, magnets, high-speed optic scanners, conveyors and EDCO personnel to separate mixed loads of recyclable material.

These state-of-the-art facilities allow EDCO to process mixed recycling with minimal contamination. Combined these facilities are capable of diverting over **366,720** tons of material from landfills each year.

Assisting jurisdictions throughout Southern California in achieving ***Zero Waste*** goals.



Escondido Resource Recovery



EDCO Recycling, Lemon Grove

# Mixed Construction Demolition & Inert (CDI) Processing Facilities

EDCO processes mixed construction loads of drywall, cardboard, lumber, metal, rock and asphalt at the company's CDI processing facilities. Combined these facilities processed over **149,047 tons** of CDI material in 2022.

Many of these materials can be reused or recycled, thus prolonging our supply of natural resources and saving valuable landfill space.

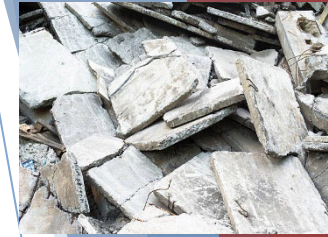


EDCO CDI Recycling Facility  
San Marcos



SANCO Resource Recovery (SRR)  
Lemon Grove

All EDCO facilities **exceed** the CALGreen Diversion requirements. Our overall diversion quality keeps us  
***On the Road to Zero Waste.***





# Public Disposal Site & Transfer Stations

EDCO's public disposal sites and transfer stations play a huge role in reducing the overall environmental impact of waste collection and disposal.

Instead of multiple trucks going to remote locations, these trucks go to our transfer stations. The waste is offloaded, sorted and combined into larger trucks to be sent to landfills and recycling centers, ultimately reducing the total number of vehicular trips to and from each site.

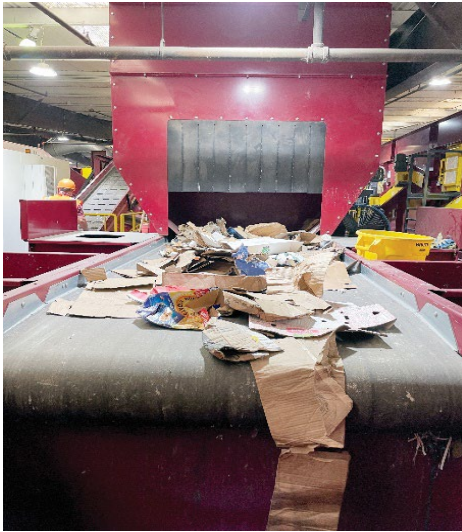


Ramona Transfer Station

## EDCO's Facilities:

- ♻️ EDCO Station - La Mesa
- ♻️ Escondido Resource Recovery
- ♻️ Fallbrook Recycling and Transfer
- ♻️ Ramona Transfer Station
- ♻️ EDCO Recovery & Transfer - San Diego
- ♻️ EDCO Recycling & Transfer - Signal Hill

# EDCO's Extensive Network of Recycling, Processing Facilities & RNG Facilities



3 Material Recovery Facilities (MRF's)



4 RNG Public Fueling Stations



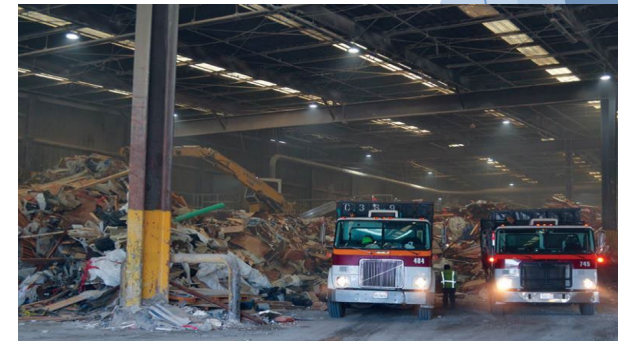
Anaerobic Digestion Facility



6 Transfer Stations



6 State Certified Recycling Buyback Centers



2 Mixed Construction Demolition and Inert (CDI) Processing Facilities



# EDCO Solar Facilities

As part of our environmental initiative, we have four roof top solar facilities, each at a separate site, that uses the solar system to offset the power of our natural gas compressor units, creating a more sustainable power and fuel source for collection operations. Solar power is the cleanest, most reliable form of renewable energy available today.

In 2022, we produced **372,100 kWh** of electricity. Equivalent to saving our environment in the following ways:

Greenhouse gas emissions from



676,010 miles driven by an average passenger vehicle

CO2 emissions from



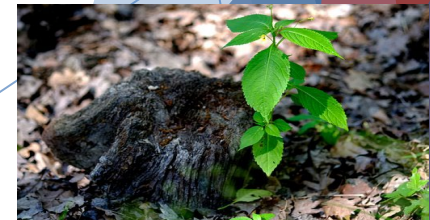
32,077,257 smartphones charging

CO2 emissions from



12,114 propane cylinders used for home barbecues

Carbon sequestered by



4,360 tree seedlings grown for 10 years



# **EDCO, Together With Our Valued Customers, Diverted Over 1,131,162 Tons From The Landfill In 2022**



**We saved....**

**25.7** million Kwh of energy by recycling 4,463 tons of PET

**1,088** thousand trees by recycling 64,008 tons of paper

**2.57** million gallons of oil by recycling 1,546 tons of aluminum

**991.43** thousand cubic yards of space in the landfill  
by recycling 110,159 tons of cardboard

**2,200** tons of feldspar

**5,572** tons of limestone

**6,012** tons of soda ash

**19,063** tons of sand

by recycling  
of glass

**29,328** tons



# What About Organics Waste?

EDCO diverted **406,722** tons of organics waste from the landfill in 2022. Disposing of organics material in the landfill releases large amounts of methane, a potent green house gas, due to anaerobic decomposition. Recycling or composting organics reduces greenhouse gas emissions and conserves landfill space.

Organic materials, contain nutrients that can be redistributed into your soil and your plants. Similar to aluminum and other recyclables, organics waste should be disposed of properly so that the valuable resources contained in them are not lost.

Organics material includes yard waste, coffee grounds, coffee filters, food scraps, food-soiled paper and natural fibers.



# Anaerobic Digestion Facility (AD)

EDCO completed the first fully permitted state-of-the-art, advanced hi-tech Anaerobic Digestion (AD) Facility in San Diego County. The AD capability includes powering our fleet of trucks with Renewable Natural Gas (RNG).



Our Anaerobic Digestion Facility is an efficient and environmentally sustainable technologically advanced structure that continues to make a significant contribution to the management of organic waste in California.

The ERR site is filled daily with activity of multiple trades being coordinated by our General Contractor as well as Hitachi, the technology provider.



Visit [edcodisposal.com](http://edcodisposal.com) to view the EDCO Anaerobic Digestion Facility video located under the Resource Center tab



# Ramona Organics Facility

Composting is nature's way of recycling. Yard waste and food waste are broken down and become food for plants.

Through composting the amount of garbage sent to the landfill is **reduced**, the organic matter is **reused** rather than dumped, and it is **recycled** into a useful soil amendment. By composting, the generation of greenhouse gases, particularly methane, is avoided.

In addition to emission reduction, compost replenishes and revitalizes exhausted farm soils by replacing trace minerals and organic material, reduces soil erosion and helps prevent storm water run off.

The EDCO Ramona Organics Facility plays a significant role in diverting waste from landfills thereby conserving landfill space and reducing the production of leachate and methane gas.



# Our Fleet. Simply Sustainable

In an effort to reduce our impact on the environment, EDCO is committed to converting our fleet to Renewable Natural Gas (RNG) powered vehicles. EDCO currently operates Natural Gas power tractors, collection trucks, pick-up trucks, bin delivery trucks, maintenance trucks and bulky item trucks.



RNG

# Why Renewable Natural Gas (RNG)

- RNG is an ultra-clean and ultra low-carbon natural gas alternative. As organic waste breaks down it emits methane gas, called biogas.
- The methane gas is captured then processed, purified, and distributed to EDCO's nine natural gas fuel stations.
- RNG provides further reduction in Greenhouse Gas effects over the use of extracted natural gas.
- RNG diverts organic waste from our landfills and turns it into a renewable form of energy.





# Renewable Natural Gas (RNG) Stations

As part of our commitment to the environment and a key part of the regional infrastructure needed to expand the use of RNG Vehicles, EDCO operates 4 public RNG stations and 7 time-fill facilities that serve company vehicles.



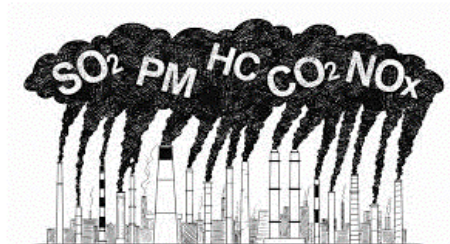
Year	Diesel Gallon Equivalents
2017	2,120,241
2018	2,351,323
2019	2,750,000
2020	3,149,872
2021	3,400,100

In 2022, EDCO distributed **over 5.15 million (DGE's)** diesel gallon equivalents, of natural gas.

## Environmental Benefits:



5.15 million gallons of diesel fuel produces 115,257,000 pounds of CO<sub>2</sub>



Fewer emissions of nearly all types of air pollutants



Natural gas equivalent produces near zero CO<sub>2</sub>

# Time-fill

Time-fill allows a fleet to fill overnight during off-peak hours. Off-peak hours are times when the energy grid is not under a lot of stress and has excess electrical generation. *If that energy is not used, it's actually wasted.*

Time-fill also increases efficiency of refueling. In addition, time-fill stations ensure that compressors only start and stop one time per day, reducing maintenance and extending the life of the equipment.

EDCO operates 7 time-fill stations.



# EDCO's Near Zero (NZ) Emission Collection Fleet

- Near Zero engines produce almost zero emission of Nitrous Oxide (NOx), which is the primary generator of air pollution.
- The NOx emissions are 90% less than 2010 standards, with ten NZ engines producing the NOx equivalent of just one 2010 engine.
- NZ technology meets the State of California 2023 NOx and 2031 petroleum reduction goals. The California Air Resources Board (CARB) identifies that the NZ engine emissions are equivalent to a 100% battery powered vehicle using electricity from a modern natural gas power plant.
- The result is that AD generated RNG powering a NZ unit, creates a carbon neutral or carbon negative (depending upon the specific intensity of the AD RNG) collection fleet.





# EDCO Services At A Glance

## Residential

Curbside, Trash, Recycling, and Organics Waste Service. Kitchen Caddies for Organics collection. Storage Containers, Christmas Tree Recycling, Temporary Bin Service, Roll-off Boxes and Bulky Item Pick up

## Commercial

Trash, Recycle and Organics Bin Services. Storage Containers. Roll-off Boxes, Bulky Item Pick up and Compactor Services

## Industrial

Storage Containers. Trash, Recycle, Organics, and CDI Roll-off Boxes Compactor Services

## Free Drop Off

Electronic Waste Recycling, Cooking Oil Recycling, Batteries and Sharps for Residential Customers

## Events

Cardboard Trash, Recycle and Organics Boxes. Commercial Trash, Recycle and Organics Bins. Roll-off Boxes

## Additional Service

Waste Assessments, Specialized Reporting and Educational Presentations



# Household Hazardous Waste (HHW) Partnerships

Household Hazardous Waste that is improperly managed poses a serious threat to human health and the environment. HHW is the unused or leftover portion of any hazardous chemicals or materials. Any leftover household product that is labeled with DANGER, WARNING, TOXIC, CAUTION, POISON, FLAMMABLE, CORROSIVE, or REACTIVE is considered a household hazardous waste. EDCO has developed unique environmental partnerships to ensure that HHW is handled safely.

## Poway HHW Facility

Partnership with:

Regional Solid Waste Association



## Escondido HHW Facility

Partnership with:

City of Escondido



## Vista HHW Facility

Partnership with:

Regional Solid Waste Association



## EDCO's Environmental Center

Partnership with:

City of Signal Hill, City of Long Beach, County of Los Angeles, and Los Angeles County Sanitation District



## La Mesa HHW Facility

Partnership with:

City of La Mesa



## Ramona HHW Facility

Partnership with:

County of San Diego

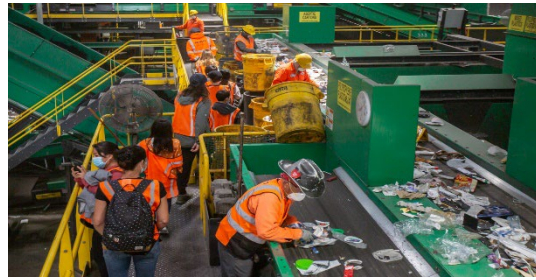


# Public Education



Tour of AD Facility

The key to maximizing sustainability is to maximize program participation among our customers. Public Education plays a vital role in sustaining safe and effective waste & recycling programs. EDCO offers tours as well as at site presentations to educate organizations on the importance of recycling. EDCO's Public Education efforts have been honored at numerous levels.



Tour of Material Recovery Facility



Elementary School Presentation

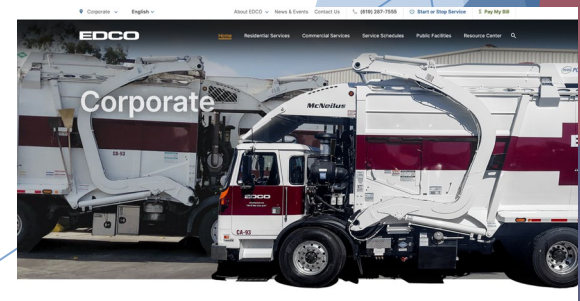
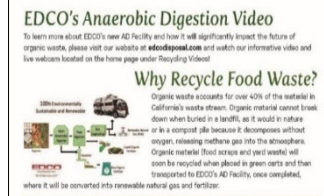


Download EDCO's New App!

EDCO's Award Winning Newsletters



EDCO's Public Education Mailers



EDCO's Website



# Giving Back

## We believe in making a difference!

EDCO actively supports the communities we serve. From litter abatement to hometown parades and local clean-ups, you're more than likely to see EDCO involved in numerous community events.



City of Vista Proclamation  
EDCO Day Nov 16, 2022





# Setting Sustainable Precedents

Leading by example, EDCO events are *Zero Waste*. Containers are placed throughout designated areas for the collection of recyclable materials and organics waste only. Preventing and reducing the generation of landfill waste through source reduction, recycling, reuse, and anaerobic digestion increases diversion and illustrates our commitment to the vital importance of sustainability.



Company Wide Sustainable Events



Sustainable Office Practices



# Employee Growth & Development



As a family owned and operated company EDCO is committed to offering a rewarding career to our employees. We focus on providing employees all the training and tools they need so they can grow and be successful within EDCO.



EDCO's average employee has a 15.5 year tenure, with numerous 20-year, 30-year, and several more 40-year employees.





# Employee Appreciation

EDCO's success is thanks to our loyal and committed team of employees. Throughout the year we celebrate employees at the Founders Day Celebration, End of Summer BBQ, Christmas Party, and Family Day Events.

In addition, EDCO provides Anniversary Recognition, Thanksgiving Turkeys and Christmas Bonuses.



20 and 40 Year Celebrations



Founders Day Celebration

Family Day Event

# Safety First

EDCO has an extensive environmental and safety program that manages and minimizes risks associated with solid-waste, recycling, and organics collection, handling, recovery, and disposal.

All EDCO employees participate in extensive safety training and review safety and operations related topics in 12 meetings per year. Employees are financially incentivized for their safety record and are rewarded on a quarterly basis.

As evidenced by our Mission Statement, the EDCO vision remains as clear as it was in 1967.



Safety Meeting



Safety Standards

# ***Our Mission***

## ***Our Vision***

*Our mission is to efficiently serve the waste collection, disposal and recycling needs of our customers while ensuring a safe and rewarding career for our employees.*

*We will achieve this objective in a professional, innovative manner that consistently displays our integrity and genuine commitment to provide superior customer service.*



*"We'll Take Care of It"*

